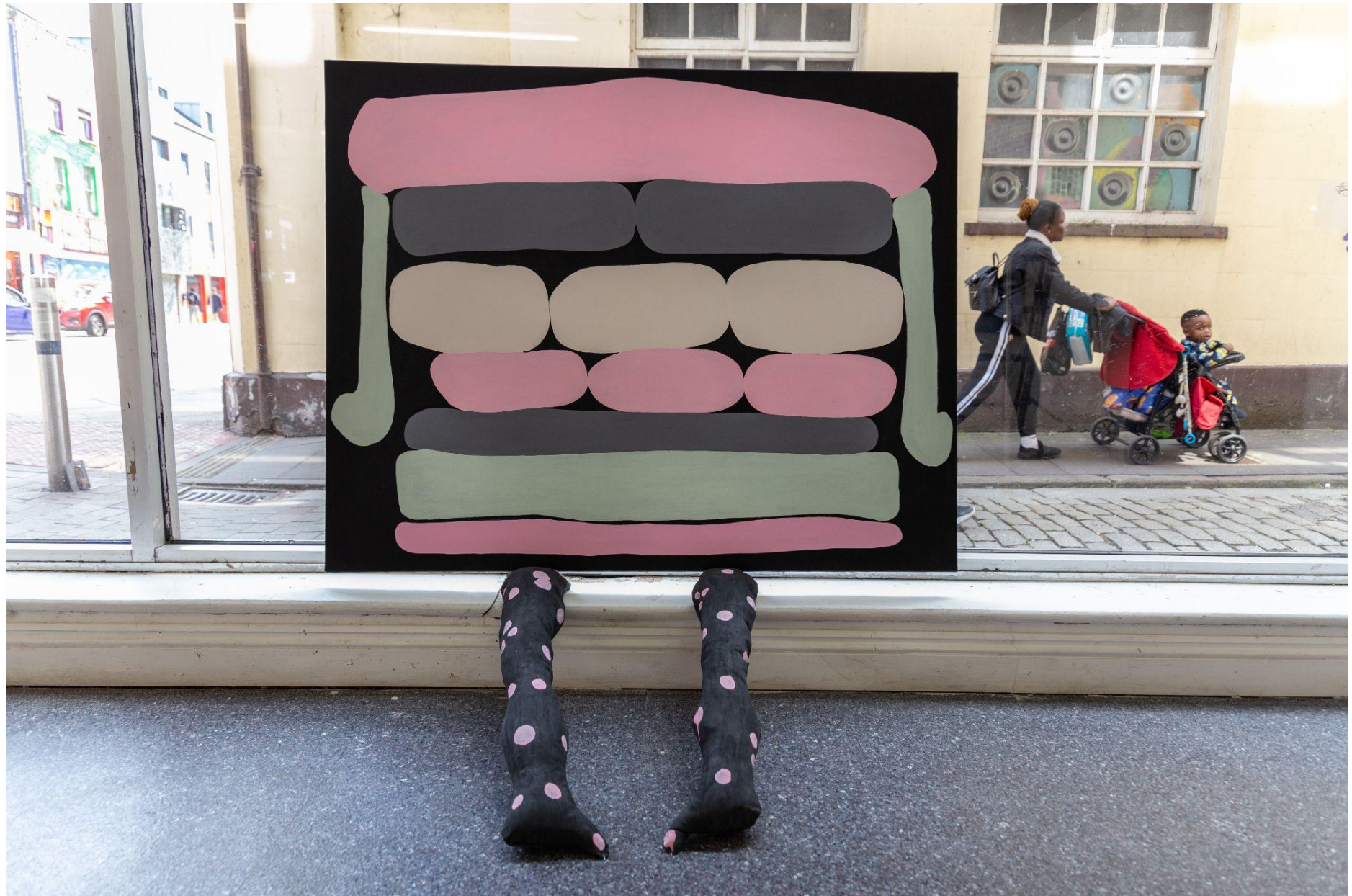




A photograph of a vintage marquee sign mounted on a building. The sign is white with black lettering and is divided into two rows. The top row reads "JULIE ANN SHERIDAN" and the bottom row reads "IT'S THE NEW THING". The sign is set against a textured, grey wall. Above the sign, there is a horizontal pipe and some wiring. Below the sign, there is a dark, textured surface, possibly a window or a lower part of the building facade. The overall image has a slightly grainy, vintage quality.

JULIE ANN SHERIDAN
IT'S THE NEW THING



All artworks are made from reusable objects and materials, acrylic paint and were created for Julie's MFA Falmouth exhibition, Jan-July, 2023.

Julie is a multidisciplinary artist and educator who lives and works in Llangadog, Wales. Since graduating from Bradford College in 1992 she has exhibited and participated in residencies nationally and internationally, most recently in Finland. In 2022 she had a solo exhibition at Volcano and returned with a new body of work for her final MFA exhibition in 2023. A residency at The Museum of Goa, Panjim, India is planned for Dec 23/Jan 24.

Statement

Julie's main focus is extended painting, how it challenges the historical flatness of traditional painting on canvas and how it responds to its specific environment, considers various surfaces as a whole and challenges spatial illusion within its specific, installation environment. An exploration of paint and painting and its connection to other disciplines, while holding onto the specificity of the canvas, pushing practice beyond the edge, to further understand the potentiality of painting and paint as subjects and paint as a language in itself. Process is ongoing and experimental, where through concept and production, materials ask questions, guide outcomes and provide a space where there are no rules. Guided by theories of hierarchical practice, the work engages with the politics of materiality and its connections to sustainability.

It's The New Thing - Volcano - Swansea - July 2023

In this exhibition Julie manipulated familiar household furniture; materials torn from fly tipped furniture, (taken from the streets of Swansea) exposing edges, interiors and marks from years of use and disposal. Julie continued the conversation surrounding materiality through minimalist and abstracted application of paint, reactivating found objects. Some of the pieces were haptic and tactile encounters where extended painting

became wearable or interactive.

The installation resulted in a set of aesthetic and sensory experiences associated with materiality, process and practice. By altering the material and working with it, what was left were artworks that were an expression of the moment, a new thing.

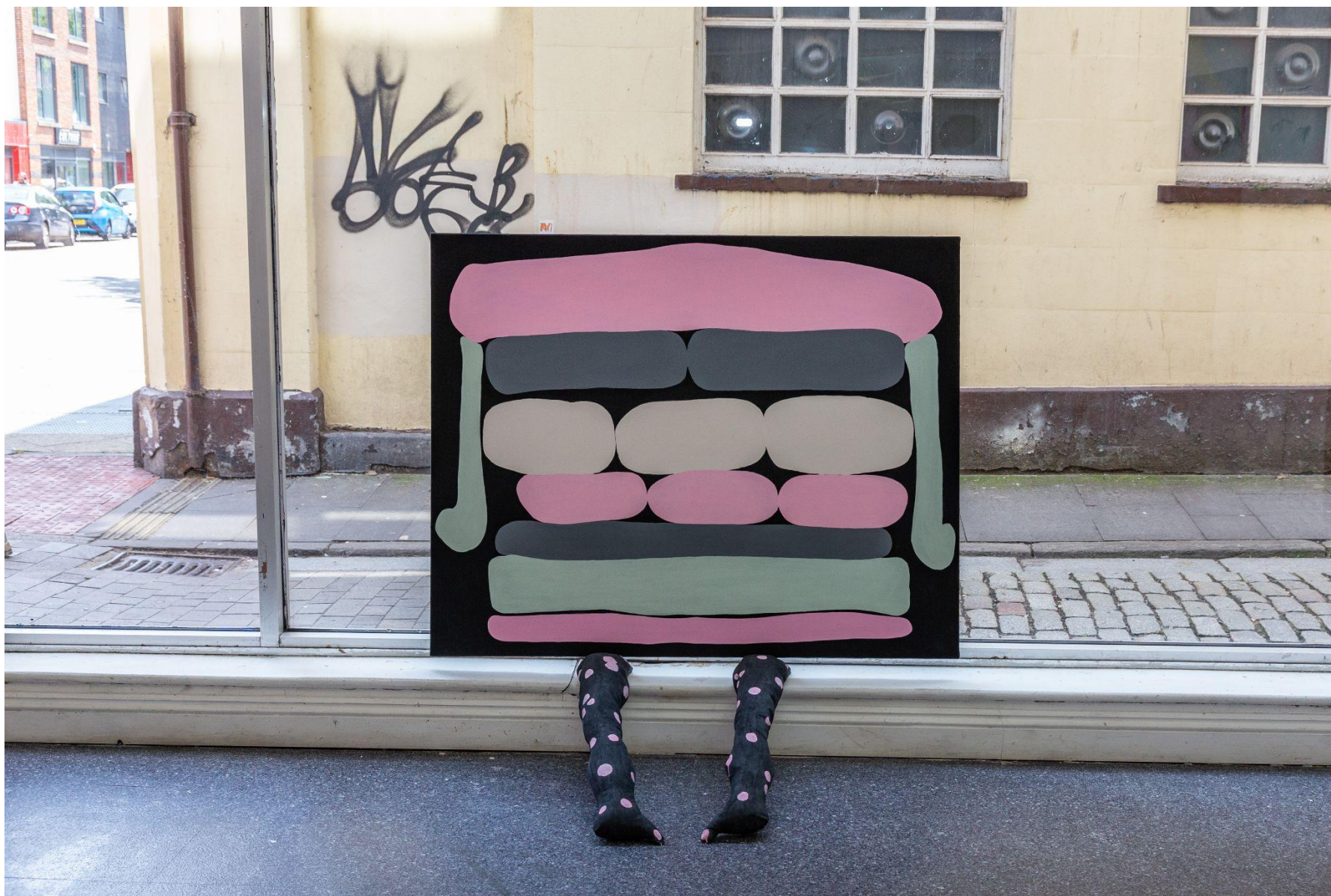
Julie was artist in residence in the space during the two weeks furthering the conversation between artist, viewer, object and architecture through production of site-specific works, interventions and workshops.

It's The New Thing



Wasted, mixed reusable fly tipped materials, 10x10x10ft.

Brief description <https://youtu.be/Df47ExJZlkl>



On the other Side. Acrylic on canvas



Gallery context image, Volcano, Swansea.



Sleeping standing up. Backing fabric and cushions, 7ftx4ft.



Interaction demo. Volcano, Swansea.



Beyond, Beyond. Acrylic on Canvas, 3x2ft.



Time Beyond. Acrylic on Canvas, 2x3ft



What's it like to be a chair? Reused upholstery fabric, elastic, acrylic paint.



Approx 2ftx4ft. Detail.



Beside Itself. Backing fabric, quilt, black acrylic, chair, stuffings. 15x4ft.



Detail of interaction.



Inside Out. Foam, acrylic paint. 4x2.5ft.



Detail



Marking Time. Acrylic on backing fabric. 5x4ft



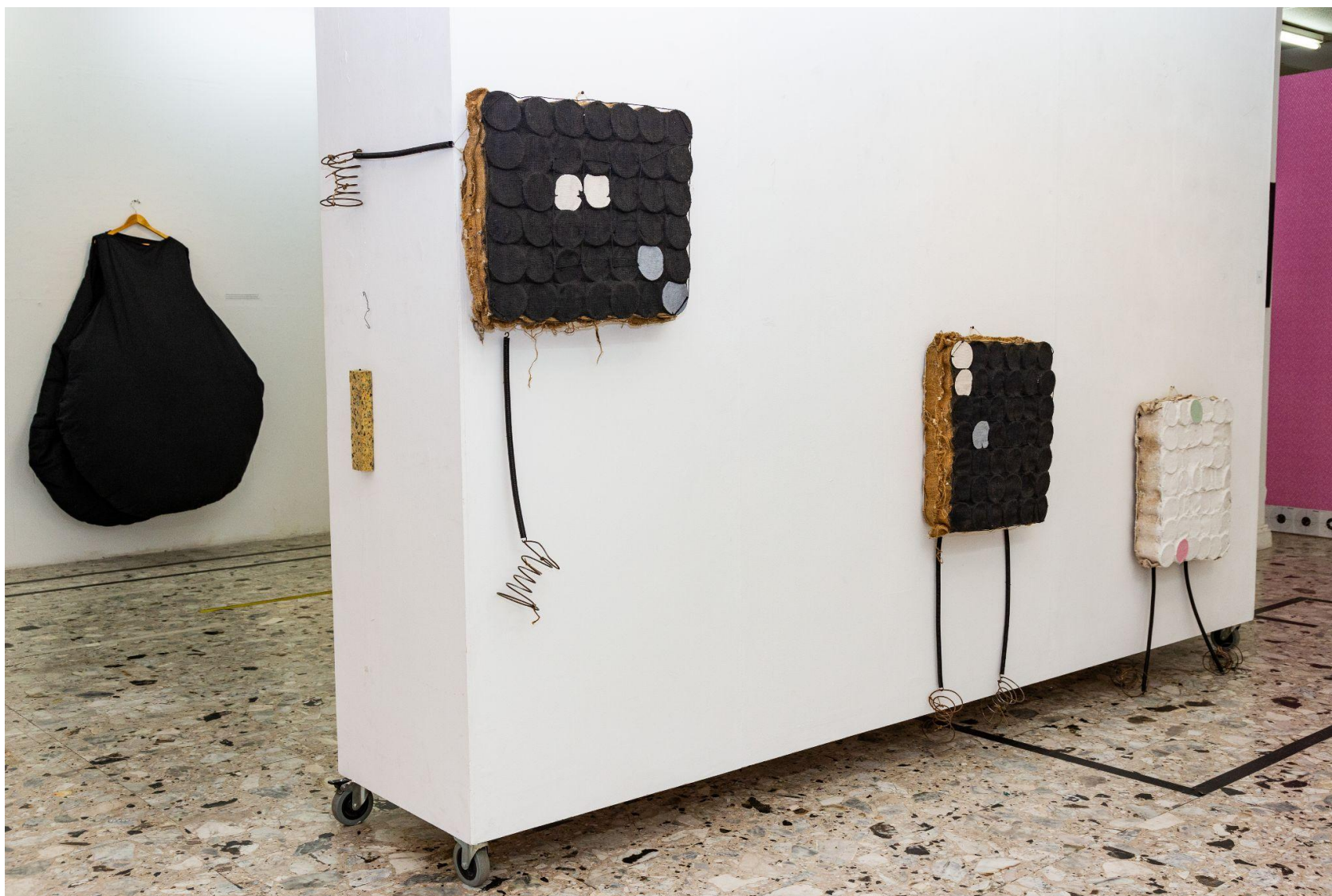
Indescribable. Acrylic on 2 seater sofa back, soft sculpture legs, cloth, acrylic, stuffing. 4x4ft.



Tight Back Up 1, back of a chair.



Tight Back Up 2, back of a chair.



It can Move. Tryptic moving through the space, interacting with the architecture. Each piece, spring bed, springs, acrylic paint, foam and metal taken from ceiling of Volcano. 2x1.5ft each.



Beyond, Beyond with additional painted fabric. Added during residency.



Time Beyond with additional painted fabric.



Be Seated. Foam contents of one yellow cushion, acrylic paint, MDF. 66"x43".



Marks of Time. Material removed from a complete fly tipped sofa. A work produced during the 2 week residency at Volcano, Swansea.



Layer 1, acrylic on reused woodchip, 0.5x2ft.



Layer 2, acrylic on reused woodchip, 0.5x2ft



Material Drawing. Material, chair legs, acrylic paint. 8x12ft

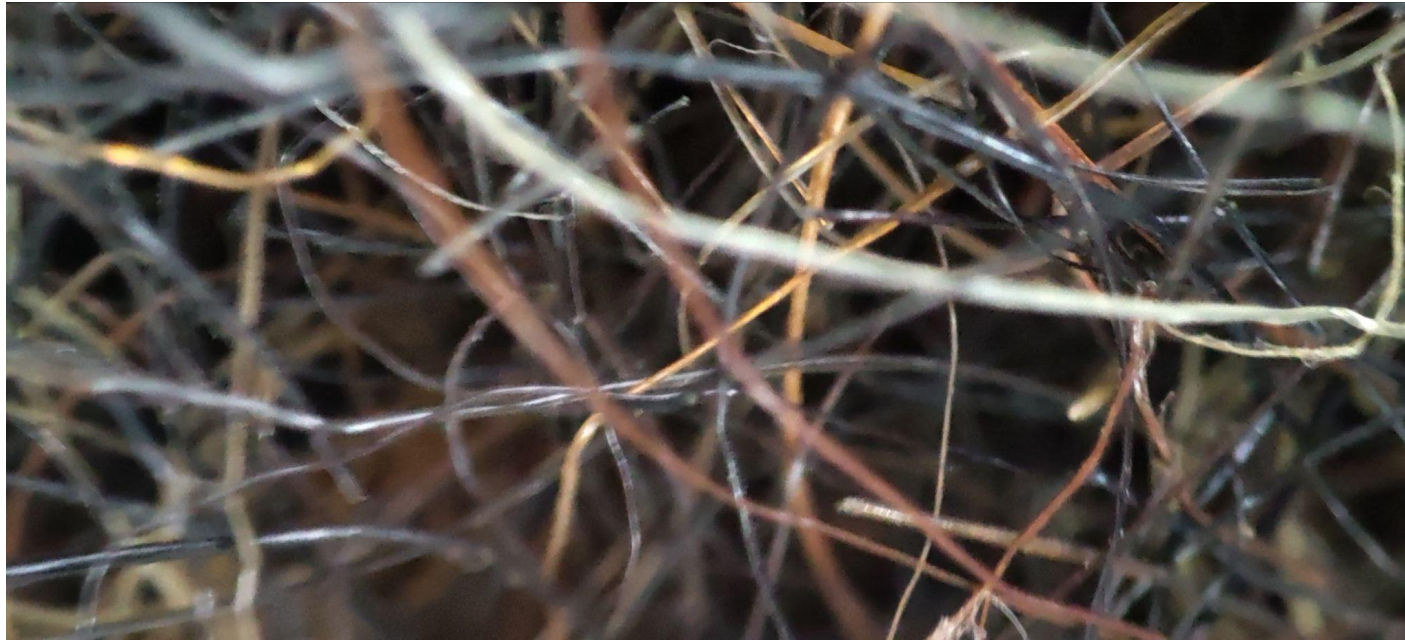


Detail of Ercol fabric

A short film describing artwork intervention. <https://youtu.be/R60MUEObuh0>

Work in Progress

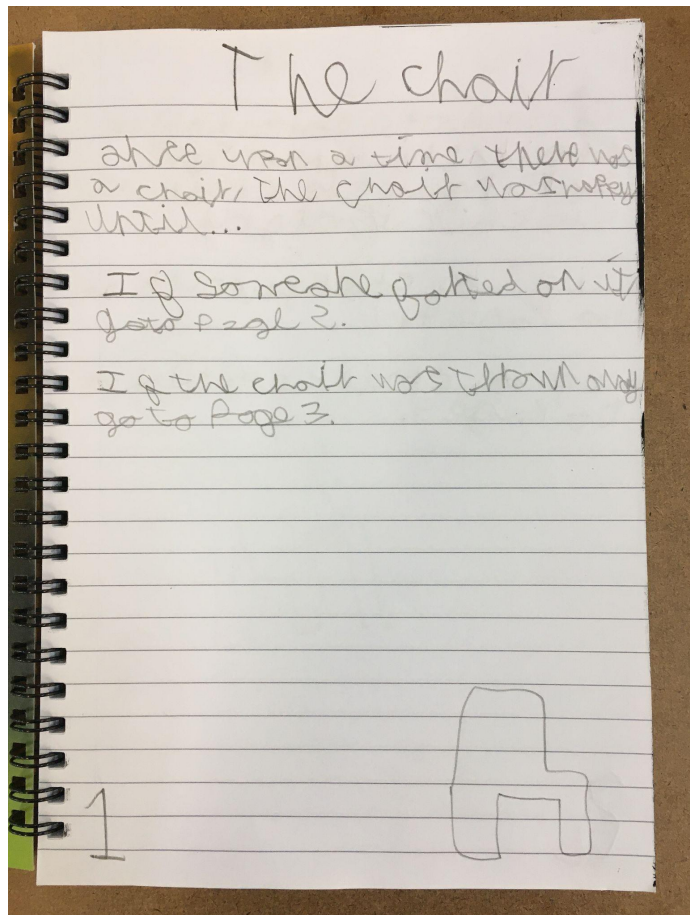
- | | |
|---|---|
| Drawings 'en plein air' from fly tipped furniture in Swansea | https://youtube.com/shorts/90l6d966sjk |
| Mick Sherdian demonstrating how to use a staple gun. | https://youtube.com/shorts/dgZ011sK344 |
| Mockup building of Volcano exhibition. | https://youtu.be/NOxyzSY3GAq |
| Wasted. Installation planning at The Last Gallery. | https://youtube.com/shorts/OexFLIjUNjM |
| Trying out materials for size at The Last Gallery Studio. | https://youtube.com/shorts/Jx7lA5Z6bFY |
| More stuffing needed. | https://youtu.be/38Hfrqttkmo |
| Experimenting with chair leg material drawing installation at The Last Gallery. | https://youtu.be/EWMcgxZjtxk |
| Marks of Time, installation produced during residency at Volcano, using a complete sofa cover | https://youtube.com/shorts/wJbTACppdt8 |



Detail from spring beds.

Audience Encounter

Walk through of It's The New Thing at Volcano, Swansea. <https://youtu.be/IVibMTWcde4>



Story by 8yr old.
A writing workshop for children at Volcano, Swansea. Storyopolis.

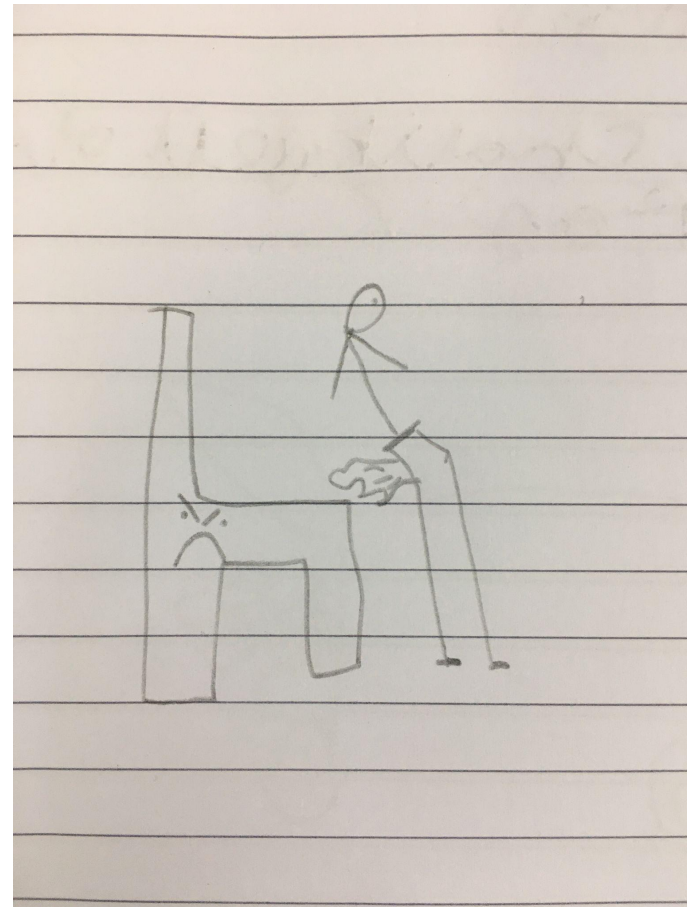


Image by same.

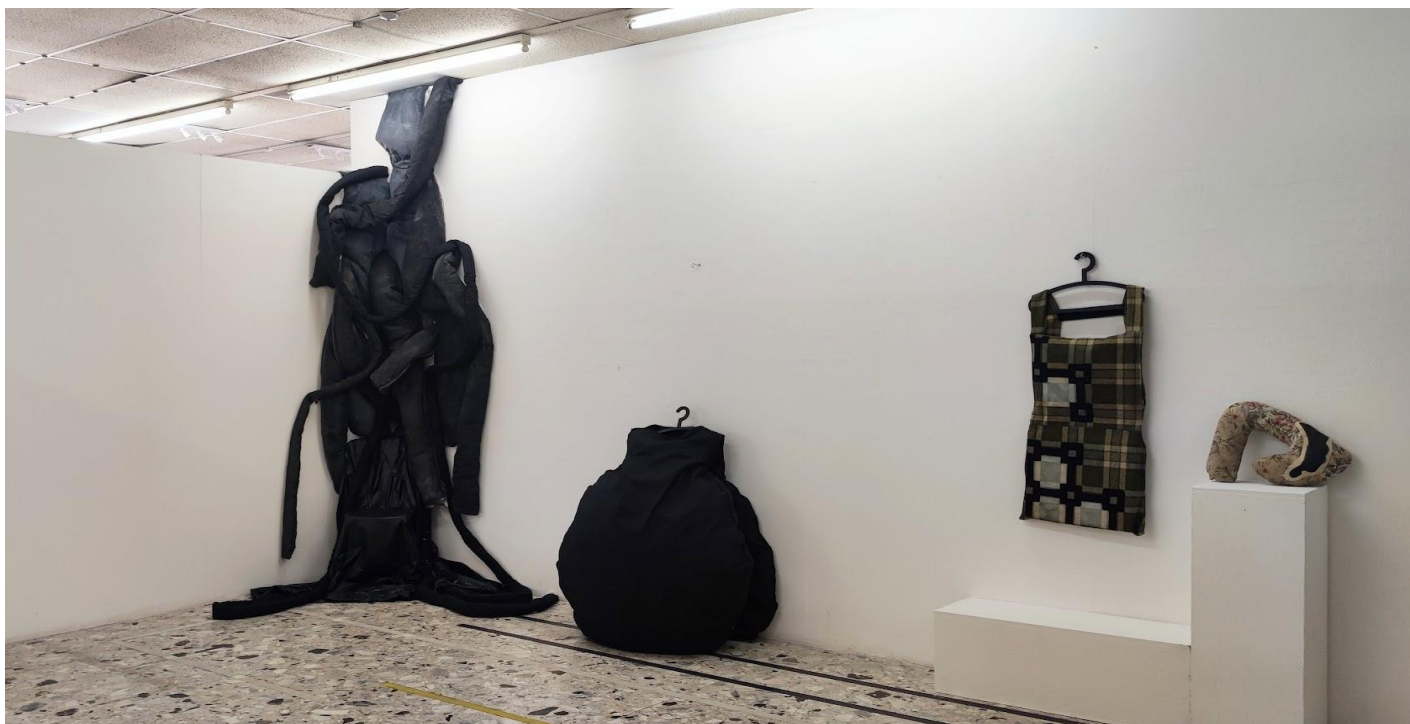


A Women's Group making soft sculptures to add to the Installation. 2 hr free workshop.

Audience participation in installation intervention. <https://youtu.be/iJDcB2uVcbo>







Context view of Beside Itself with Sian and Jan interacting on the previous page.



Demo of What is it like to be a chair?, <https://youtu.be/AWNnlfPsBRo>



Sleeping Standing Up



Information and contact details

Website specifically for exhibition.

www.julieannsheridan.co.uk

Social media platforms

<https://linktr.ee/julieannsheridan>

+44 7752334198

